



Re-imagine Managing your z/OS Systems using the IBM z/OS Management Services Catalog

SUNNY ANAND

Software Developer

Chat Moderators

Hiren Shah

Chief Product owner

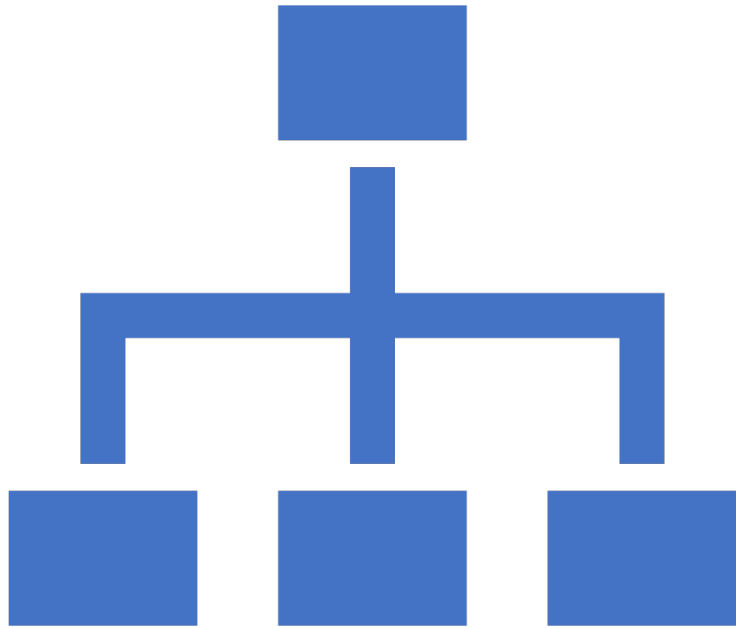
John Czukermann

Product owner

Agenda

- Why z/OS Management Services Catalog?
- Completing z/OS tasks
- Changing how to help early-tenure colleagues perform z/OS management tasks
- Transforming z/OSMF workflows into services
- Handling different user privileges using runAsUser in services
- Getting started

Why z/OS Management Services Catalog?



**Managing z/OS is
complex and
manual.**

**The learning curve
is steep.**





z/OS Management Services Catalog

A z/OSMF tool for z/OS system programmers
to manage their z/OS environments

- Experienced and mid-level z/OS system programmers can translate their existing z/OS management tasks into **services** as administrators.
- Early-tenure z/OS system programmers can run these **services** to complete the z/OS management tasks.



Benefits : Using services to complete z/OS management tasks



Reduces
complexity



Reduces
errors



Minimizes
time on tasks



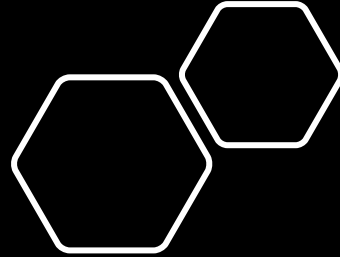
Requires less
help

Completing z/OS tasks

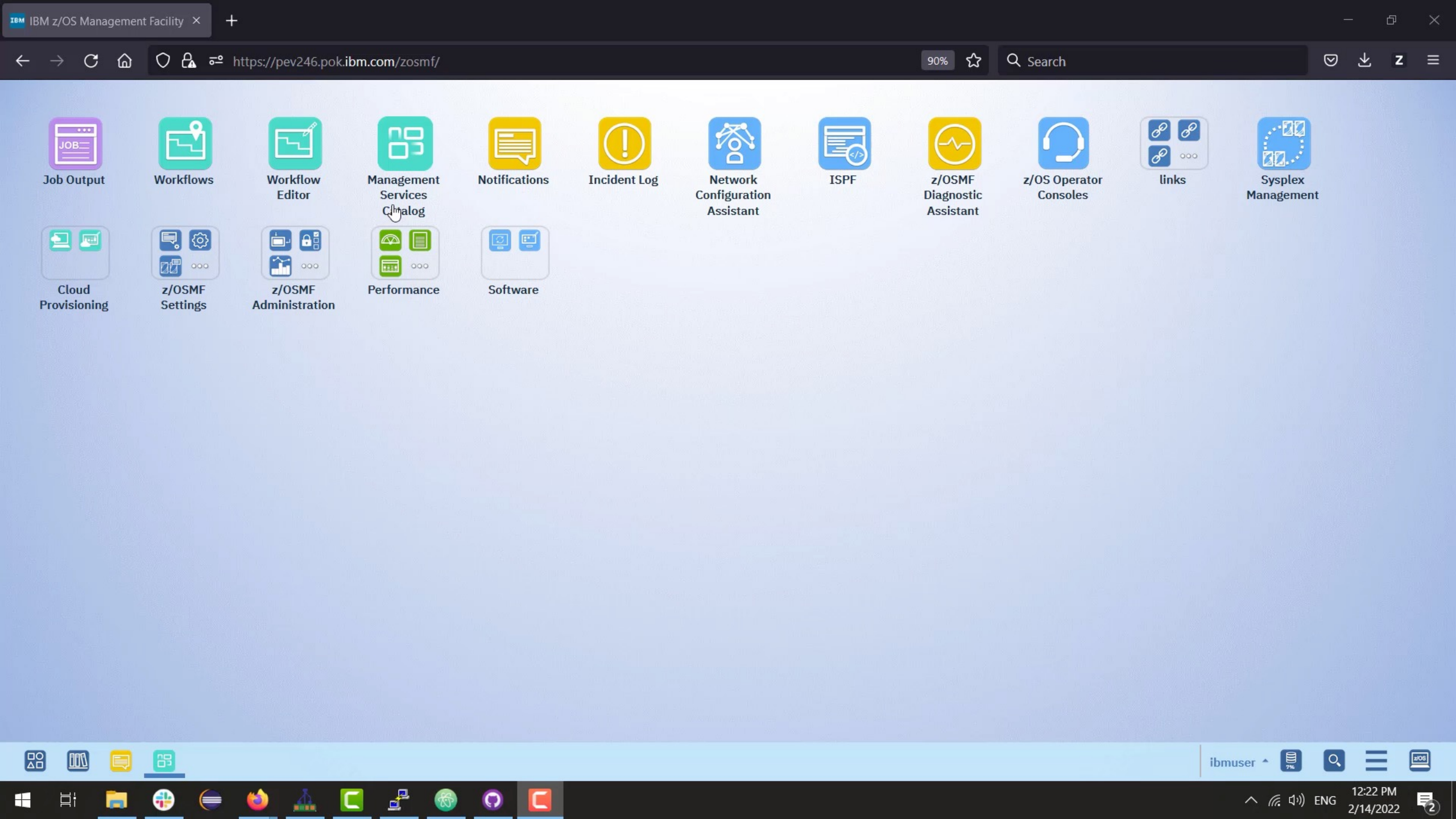
```
//DEFINE      EXEC      PGM=IDCAMS
//SYSPRINT DD      SYSOUT=*
//SYSIN       DD      *
DEFINE
    CLUSTER
    (NAME(IZU.SIZUUSRD)
    VOLUMES(volser)
    LINEAR
    CYL(200 20)
    SHAREOPTIONS(3 3))
/*
//FORMATFS EXEC      PGM=IOEAGFMT,REGION=0M,COND=(0,NE,DEFINE),
// PARM=('-aggregate IZU.SIZUUSRD -compat')
//SYSPRINT DD      SYSOUT=*
//SYSPRINT DD      SYSOUT=*
//SYSPRINT DD      SYSOUT=*
```

Today, an entry-level z/OS system programmer uses a 3270 terminal and ISPF interface to complete z/OS management tasks like creating a zFS file system

Demo 1



z/OS Management Services Catalog can help an entry-level system programmer complete z/OS management tasks, like creating, mounting, and expanding a zFS file system.



Job Output



Workflows



Workflow Editor



Management Services Catalog



Notifications



Incident Log



Network Configuration Assistant



ISPF



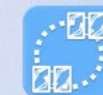
z/OSMF Diagnostic Assistant



z/OS Operator Consoles



links



Sysplex Management



Cloud Provisioning



z/OSMF Settings



z/OSMF Administration

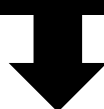


Performance



Software

```
//DEFINE EXEC PGM=IDCAMS
//SYSPRINT DD SYSOUT=*
//SYSIN DD *
DEFINE
  CLUSTER
  (NAME(IZU.SIZUUSD)
  VOLUMES(volser)
  LINEAR
  CYL(200 20)
  SHAREOPTIONS(3 3))
/*
//FORMATFS EXEC PGM=IOEAGFMT,REGION=0M,COND=(0,NE,DEFIN
// PARM=('-aggregate IZU.SIZUUSD -compat')
//SYSPRINT DD SYSOUT=*
//STDOUT DD SYSOUT=*
//STDERR DD SYSOUT=*
//*
```



Management Services Catalog

Catalog Activity History

New service +

Demo

Create a zFS file system

Last saved on Feb 14, 2022, 12:22:51 PM EST

Target system: SY1

Status: Draft

Help x

- ☒ General
- ☐ Allocation settings
- ☐ Run properties

General

Prior to running this service, determine whether to allocate the new zFS using either SMS or Non-SMS managed volumes. If SMS managed, determ... [Show all](#)

Data set name
Enter a fully-qualified data set name for the zFS file system.

Enter value

Catalog name (optional)
Enter the fully-qualified catalog name to define the data set in. Only use this if you want to override the default catalog.

Back Next

Demo 1 : Summary

- An entry-level system programmer can complete z/OS management tasks like creating, mounting, and expanding a zFS with guidance built into a service by their experienced colleagues.

They no longer need to use 3270 terminal and ISPF interfaces. Instead, they open z/OS Management Services Catalog in z/OSMF and run services to manage their z/OS environment.

“z/OS Management Services Catalog is unique in that it will help rookies like me, who come in with very little knowledge about how to execute a batch job, to accelerate our learning curve by providing services that include the required JCL to complete z/OS management tasks.”

Steve Yang

Early tenure z/OS Systems Programmer, US Bank

Changing how
experienced system
programmers help
early-tenure colleagues
perform z/OS
management tasks

Administrators can ...



Create and modify
services



Approve and publish
services to the Catalog



Configure settings

Management Services Catalog

Catalog Activity History Administration

New service +

Administration

1 Help

2

3

1

2

3

4

5

6

7

8

9

10

11

12

13

14

15

16

17

18

19

20

21

22

23

24

25

26

27

28

29

30

31

32

33

34

35

36

37

38

39

40

41

42

43

44

45

46

47

48

49

50

51

52

53

54

55

56

57

58

59

60

61

62

63

64

65

66

67

68

69

70

71

72

73

74

75

76

77

78

79

80

81

82

83

84

85

86

87

88

89

90

91

92

93

94

95

96

97

98

99

100

101

102

103

104

105

106

107

108

109

110

111

112

113

114

115

116

117

118

119

120

121

122

123

124

125

126

127

128

129

130

131

132

133

134

135

136

137

138

139

140

141

142

143

144

145

146

147

148

149

150

151

152

153

154

155

156

157

158

159

160

161

162

163

164

165

166

167

168

169

170

171

172

173

174

175

176

177

178

179

180

181

182

183

184

185

186

187

188

189

190

191

192

193

194

195

196

197

198

199

200

201

202

203

204

205

206

207

208

209

210

211

212

213

214

215

216

217

218

219

220

221

222

223

224

225

226

227

228

229

230

231

232

233

234

235

236

237

238

239

240

241

242

243

244

245

246

247

248

249

250

251

252

253

254

255

256

257

258

259

260

261

262

263

264

265

266

267

268

269

270

271

272

273

274

275

276

277

278

279

280

281

282

283

284

285

286

287

288

289

290

291

292

293

294

295

296

297

298

299

300

301

302

303

304

305

306

307

308

309

310

311

312

313

314

315

316

317

318

319

320

321

322

323

324

325

326

327

328

329

330

331

332

333

334

335

336

337

338

339

340

341

342

343

344

345

346

347

348

349

350

351

352

353

354

355

356

357

358

359

360

361

362

363

364

365

366

367

368

369

370

371

372

373

374

375

376

377

378

379

380

381

382

383

384

385

386

387

388

389

390

391

392

393

394

395

396

397

398

399

400

401

402

403

404

405

406

407

408

409

410

411

412

413

414

415

416

417

418

419

420

421

422

423

424

425

426

427

428

429

430

431

432

433

434

435

436

437

438

439

440

441

442

443

444

445

446

447

448

449

450

451

452

453

454

455

456

457

458

459

460

461

462

463

464

465

466

467

468

469

470

471

472

473

474

475

476

477

478

479

480

481

482

483

484

485

486

487

488

489

490

491

492

493

494

495

496

497

498

499

500

501

502

503

504

505

506

507

508

509

510

511

512

513

514

515

516

517

518

519

520

521

522

523

524

525

526

527

528

529

530

531

532

533

534

535

536

537

538

539

540

541

542

543

544

545

546

547

548

549

550

551

552

553

554

555

556

557

558

559

560

561

562

563

564

565

566

567

568

569

570

571

572

573

574

575

576

577

578

579

580

581

582

583

584

585

586

587

588

589

590

591

592

593

594

595

596

597

598

599

600

601

602

603

604

605

606

607

608

609

610

611

612

613

614

615

616

617

618

619

620

621

622

623

624

625

626

627

628

629

630

631

632

633

634

635

636

637

638

639

640

641

642

643

644

645

646

647

648

649

650

651

652

653

654

655

656

657

658

659

660

661

662

663

664

665

666

667

668

669

670

671

672

673

674

675

676

677

678

679

680

681

682

683

684

685

686

687

688

689

690

691

692

693

694

695

696

697

698

699

700

701

702

703

704

705

706

707

708

709

710

711

712

713

714

715

716

717

718

719

720

721

722

723

724

725

726

727

728

729

730

731

732

733

734

735

736

737

738

739

740

741

742

743

744

745

746

747

748

749

750

751

752

753

754

755

756

757

758

759

760

761

762

763

764

765

766

767

768

769

770

771

772

773

774

775

776

777

778

779

780

781

782

783

784

785

786

787

788

789

790

791

792

793

794

795

796

797

798

799

800

801

802

803

804

805

806

807

808

809

810

811

812

813

814

815

816

817

818

819

820

821

822

823

824

825

826

827

828

829

830

831

832

833

834

835

836

837

838

839

840

841

842

843

844

845

846

847

848

849

850

851

852

853

854

855

856

857

858

859

860

861

862

863

864

865

866

867

868

869

870

871

872

873

874

875

876

877

878

879

880

881

882

883

884

885

886

887

888

889

890

891

892

893

894

895

896

897

898

899

900

901

902

903

904

905

906

907

908

909

910

911

912

913

914

915

916

917

918

919

920

921

922

923

924

925

926

927

928

929

930

931

932

933

934

935

936

937

938

939

940

941

942

943

944

945

946

947

948

949

950

951

952

953

954

955

956

957

958

959

960

961

962

963

964

965

966

967

968

969

970

971

972

973

974

975

976

977

978

979

980

981

982

983

984

985

986

987

988

989

990

991

992

993

994

995

996

997

998

999

1000

1001

1002

1003

1004

1005

1006

1007

1008

1009

1010

1011

1012

1013

1014

1015

1016

1017

1018

1019

1020

1021

1022

1023

1024

1025

1026

1027

1028

1029

1030

1031

1032

1033

1034

1035

1036

1037

1038

1039

1040

1041

1042

1043

1044

1045

1046

1047

1048

1049

1050

1051

1052

1053

1054

1055

1056

1057

1058

1059

1060

1061

1062

1063

1064

1065

1066

1067

1068

1069

1070

1071

1072

1073

1074

1075

1076

1077

1078

1079

1080

1081

1082

1083

1084

1085

1086

1087

1088

1089

1090

1091

1092

1093

1094

1095

1096

1097

1098

1099

1100

1101

1102

1103

1104

1105

1106

1107

1108

1109

1110

1111

1112

1113

1114

1115

1116

1117

1118

1119

1120

1121

1122

1123

1124

1125

1126

1127

1128

1129

1130

1131

1132

1133

1134

1135

1136

1137

1138

1139

1140

1141

1142

1143

1144

1145

1146

1147

1148

1149

1150

1151

1152

1153

1154

1155

1156

1157

1158

1159

1160

1161

1162

1163

1164

1165

1166

1167

1168

1169

1170

1171

1172

1173

1174

1175

1176

1177

1178

1179

1180

1181

1182

1183

1184

1185

1186

1187

1188

1189

1190

1191

1192

1193

1194

1195

1196

1197

1198

1199

1200

1201

1202

1203

1204

1205

1206

1207

1208

1209

1210

1211

1212

1213

1214

1215

1216

1217

1218

1219

1220

1221

1222

1223

1224

1225

1226

1227

1228

1229

1230

1231

1232

1233

1234

1235

1236

1237

1238

1239

1240

1241

1242

1243

1244

1245

1246

1247

1248

1249

1250

1251

1252

1253

1254

1255

1256

1257

1258

1259

1260

1261

1262

1263

1264

1265

1266

1267

1268

1269

1270

1271

1272

1273

1274

1275

1276

1277

1278

1279

1280

1281

1282

1283

1284

1285

1286

1287

1288

1289

1290

1291

1292

1293

1294

1295

1296

1297

1298

1299

1300

1301

1302

1303

1304

1305

1306

1307

1308

1309

1310

1311

1312

1313

1314

1315

1316

1317

1318

1319

1320

1321

1322

1323

1324

1325

1326

1327

1328

1329

1330

1331

1332

1333

1334

1335

1336

1337

1338

1339

1340

1341

1342

1343

1344

1345

1346

1347

1348

1349

1350

1351

1352

1353

1354

1355

1356

1357

1358

1359

1360

1361

1362

1363

1364

1365

1366

1367

1368

1369

1370

1371

1372

1373

1374

1375

1376

1377

1378

1379

1380

1381

1382

1383

1384

1385

1386

1387

1388

1389

1390

1391

1392

1393

1394

1395

1396

1397

1398

1399

1400

1401

1402

1403

1404

1405

1406

1407

1408

1409

1410

1411

1412

1413

1414

1415

1416

1417

1418

1419

1420

1421

1422

1423

1424

1425

1426

1427

1428

1429

1430

1431

1432

1433

1434

1435

1436

1437

1438

1439

1440

1441

1442

1443

1444

1445

1446

1447

1448

1449

1450

1451

1452

1453

1454

1455

1456

1457

1458

14

- Today, experienced z/OS system programmers create and manage education materials to train early-tenure z/OS system programmers on how to complete z/OS management tasks.

Example 5 - increase a file system

- Steps to increase a file system
 - a. Verify file system is out of space
 - b. Allocate a larger file system
 - c. Verify old file system is not in use
 - d. Unmount the old file system and mount it "Read only" to a directory
 - e. Mount the new file system to a directory
 - f. Change permissions, owner and group owner of the new directory to match the old directory
 - g. Run copytree
 - h. Unmount file systems and mount new file system to the correct directory

Example 5a - verify file system is out of space

- An HFS can be out of space for several reasons:
 - HFS has reached 123 extents
 - The volume is out of space
 - The HFS was allocated with 0 secondary extents
- Use ISPF 3.4 to determine the cause and also use the USS command `df -hPv path`, i.e.


```
df -hPv /u/helix
```
- Use `ls -al` or use ISHELL -> `File` -> Attributes to get the owner and permissions of the directory (we will need this later)

Example 5b - allocate new file system

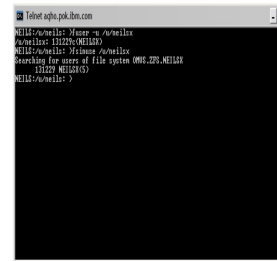
- Allocate a larger HFS file system with a new name using either of the two methods below
 1. ISHELL -> `File_systems` -> 3. New HFS
 2. JCL

Example 5c - check if file system is in use

- Verify no one is using the file system using the by issuing the `fuser` command or the `fsinuse` command (you can get the `fsinuse` command from the USS Tools and Toys website):

<http://www-03.ibm.com/servers/eserver/zseries/zos/unixbpaxty2.html>
 - `fuser -u /u/helix`
 - `fsinuse /u/helix`

Example 5c - verify file system in use summary



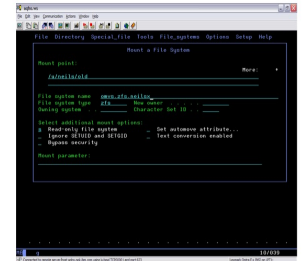
Example 5d - unmount filesystem

- Unmount the old file system from ISHELL -> `File_systems` -> 1. Mount Table - then place a U next to the file system you want to unmount and on the next screen select option 1 for Normal.
- If you receive an IO error you may need to unmount it with option 3 for Immediate and/or option 4 for Force.

Example 5e - mount file systems

- Mount the old file system in Read only mode using ISHELL -> `File_systems` -> 3. Mount and select Read-only file system
- Mount the new filesystem
- I generally use the following convention:
 - `/u/helix/old` for the old file system
 - `/u/helix/new` for the new file system

Example 5e - mount using ISHELL



Example 5f - change permissions/owner/group

- Using the output of `ls -al` in step a, issue the appropriate `chown` and `chmod` commands for the new filesystem or use ISHELL -> `File` -> 2. Attributes -> Edit -> 1. Mode fields, then 2. Owning User and then 3. Owning Group to change the values:
 - `chown userid:group /u/helix/new`
 - `chmod ppp /u/helix/new`

Example 5g - copy file system

- Use the `df -hPv` commands to verify you have mounted the file systems correctly with the correct mount modes (Read only for the old file system).
- You can use `copytree` from batch or from USS or use the `pax` command. For this presentation we will use `copytree`. `copytree` is located in `lsamples`. Here is the syntax:


```
copytree from_directory to_directory
```
- So in our example it would be (`-s` option switches to `uid=0` assuming the user has access to `BPX.SUPERUSER`):


```
copytree -s /u/helix/old /u/helix/new
```

Example 5g - copytree JCL

```

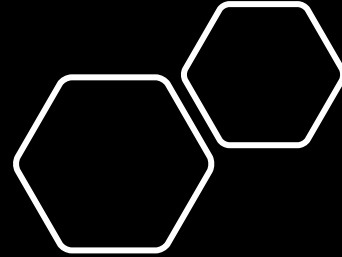
//SYSTA  EXEC  PGM=CKEPT01,REGION=0M
//SYSEXEC DD DSN=HELIX.KEXX,DISP=SEQR
//SYSPRINT DD SYSOUT=*
//SYSPRINT DD SYSOUT=*
//SYSPRINT DD *
//SYSPRINT DD *
copytree -s /u/helix/old
/u/helix/new
/*
  
```

Example 5h - unmount file systems

- Issue the `df -hPv` commands to verify the old and new file systems look ok
- Unmount the file systems
- Rename the file systems
- Mount the new file system

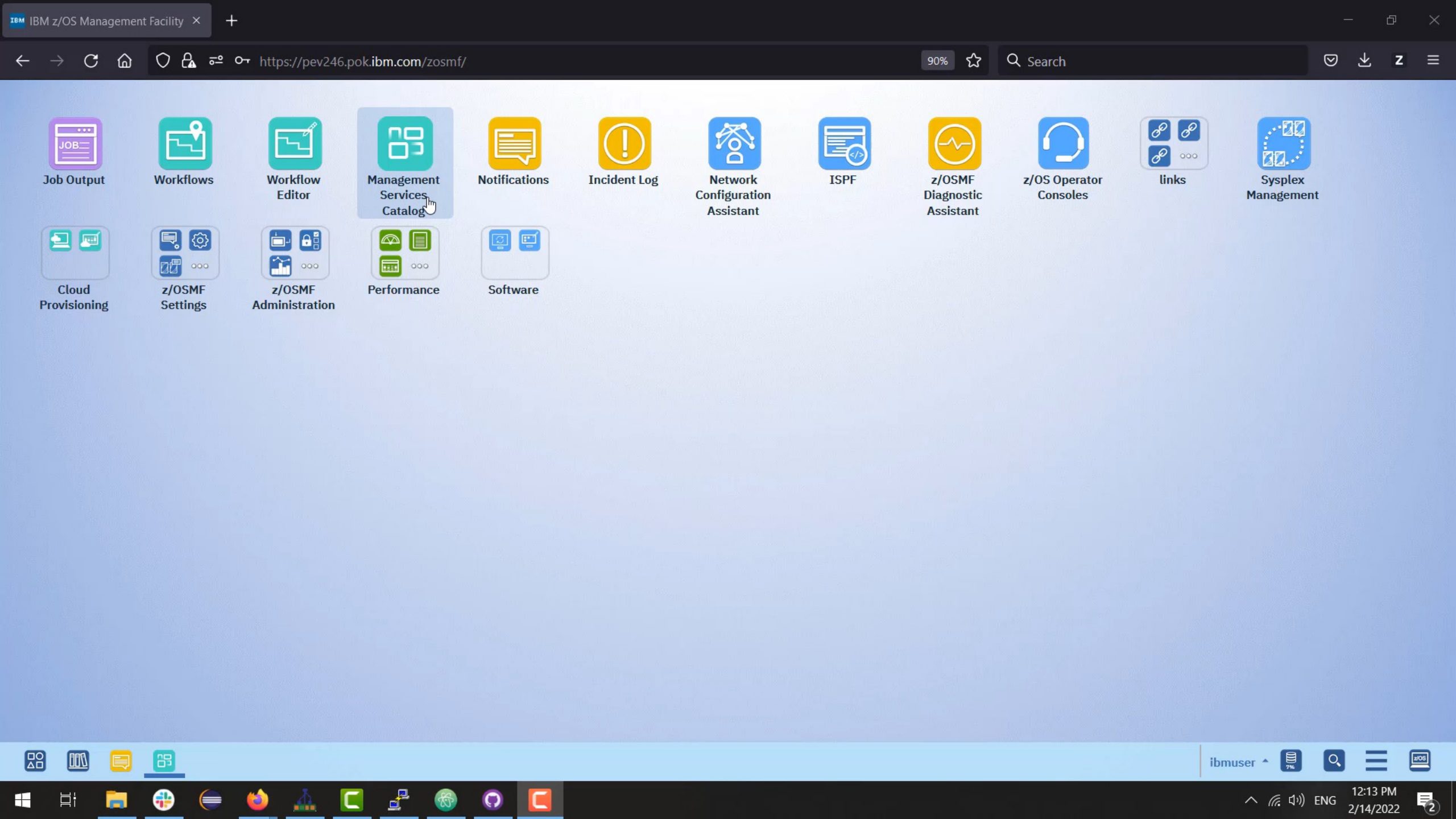
Current Sample Services

- Services available in z/OS Management Services Catalog to use as is or modify to fit your specific needs.
- Create a zFS file system
- Expand a zFS file system
- Mount a zFS file system
- Unmount a zFS file system
- Replace an SMP/E RECEIVE ORDER certificate
- Delete a RACF user ID
- Delete an alias from a catalog



Demo2

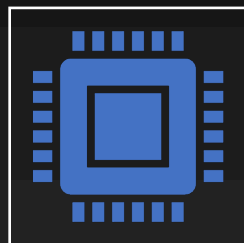
Sample services can help experienced z/OS system programmers make services available in z/OS Management Services Catalog.



Demo 2 : Summary



An experienced z/OS system programmer can configure sample services and publish them in z/OS Management Services Catalog for colleagues to run.



This reduces the documentation and help that an early-tenure z/OS system programmer needs.

Example 5 – increase a file system

- Steps to increase a file system
 - Verify file system is out of space
 - Allocate a larger file system
 - Verify old file system is not in use
 - Unmount the old file system and mount it "Read only" to a directory
 - Mount the new file system to a directory
 - Change permissions, owner and group owner of the new directory to match the old directory
 - Run copytree
 - Unmount file systems and mount new file system to the correct directory

Example 5a – verify file system is out of space

- An HFS can be out of space for several reasons:
 - HFS has reached 123 extents
 - The volume is out of space
 - The HFS was allocated with 0 secondary extents
- Use ISPF 3.4 to determine the cause and also use the USS command of -hpf path, ie -dt -hpf /u/hello
- Use ls-l or use ISHELL> FILE -> Attributes to get the owner and permissions of the directory (we will need this later)

Example 5b – allocate new file system

- Allocate a larger HFS file system with a new name using either of the two methods below
 - ISHELL -> File_systems -> 2. New HFS
 - JCL

Example 5c – check if file system is in use

- Verify no one is using the file system using the by issuing the fuser command or the fsstat command (you can get the fsstat command from the USS Tools and Toys website):
http://www-03.ibm.com/server/eserver/zseries/zos/unixspas1p2.html
 - fuser -u /u/hello
 - fsstat /u/hello

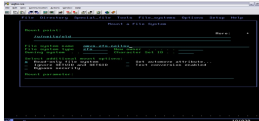
Example 5d – unmount filesystem

- Unmount the old file system from ISHELL -> File_systems -> 1. Mount Tabla – then place a u next to the file system you want to unmount and on the next screen select option 1 for Normal.
- If you receive an IO error you may need to unmount it with option 3 for immediate and/or option 4 for Force.

Example 5e – mount file systems

- Mount the old file system in Read only mode using ISHELL -> File_systems -> 3. Mount, and select read-only file system
- Mount the new file system
- I generally use the following convention:
 - /u/hello for the old file system
 - /u/hello/new for the new file system

Example 5f – mount using ISHELL



Management Services Catalog

Catalog Activity History Administration
New service + ⓘ ?

Administration

Last refreshed a few seconds ago

Filter by status ▼	Filter by category ▼	Search table...	
<input type="checkbox"/> Service name			
<input type="checkbox"/> Create a zFS file system	Unpublished	Sample services	Feb 11, 2022, 02:05:09 PM EST ⓘ
<input type="checkbox"/> Replace SMP/E RECEIVE ORDER certificate	Unpublished	Sample services	Feb 11, 2022, 02:05:09 PM EST ⓘ
<input type="checkbox"/> Delete a RACF user ID	Unpublished	Sample services	Feb 11, 2022, 02:05:08 PM EST ⓘ
<input type="checkbox"/> Expand a zFS file system	Unpublished	Sample services	Feb 11, 2022, 02:05:08 PM EST ⓘ
<input type="checkbox"/> Unmount a zFS file system	Unpublished	Sample services	Feb 11, 2022, 02:05:07 PM EST ⓘ
<input type="checkbox"/> Delete an alias from a catalog	Unpublished	Sample services	Feb 11, 2022, 02:05:07 PM EST ⓘ
<input type="checkbox"/> Mount a zFS file system	Unpublished	Sample services	Feb 11, 2022, 02:05:06 PM EST ⓘ

Items per page: 25 ▼ 1-7 of 7 items
1 ▼ of 1 pages ◀ ▶

Transforming z/OSMF workflows into services

Today...

- Experienced z/OS system programmers create z/OSMF workflows that are linear and require additional understanding about inputs.

Provide output type to file or dataset

Workflow Step 1. Provide output type to file or dataset

Dependencies Notes **Perform** Status Input Variables

Input Variables - General

Enter the variable values for this input category.

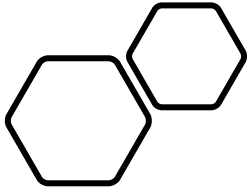
Write output type: ⓘ - Write output type:
Select or type

Greetings to write to file or dataset: ⓘ - Greetings to write to file or dataset:

Dataset name for HelloWorld: ⓘ - Dataset name for HelloWorld:

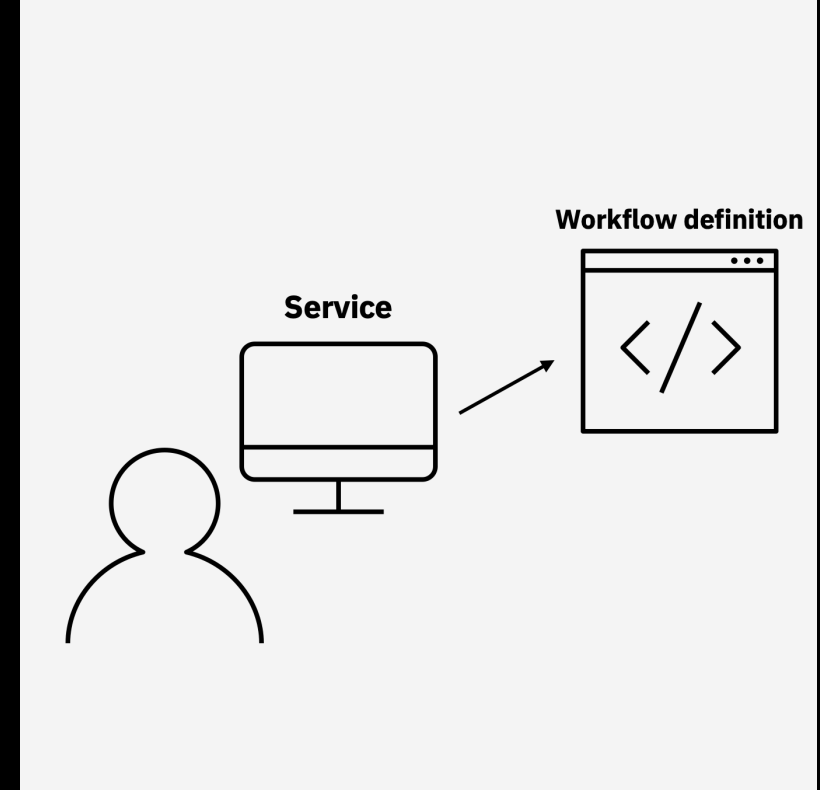
Dataset member for HelloWorld: ⓘ - Dataset member for HelloWorld:

File name for HelloWorld: ⓘ - File name for HelloWorld:



Demo 3

An experienced z/OS system programmer can create a basic service that includes logic between inputs and provides guidance to help early-tenure z/OS system programmers perform management tasks.



IBM z/OS Management Facility

90% ☆ 🔍 Search

Management Services Catalog

CatalogActivityHistoryAdministration

New service + ⚙️ ?

Administration

Last refreshed a few seconds ago

Filter by status ▾Filter by category ▾🔍 Search table...

🔄New service +

<input type="checkbox"/> Service name	Status	Category	Last modified
<input type="checkbox"/> Expand a zFS file system	Published	Demo	Feb 14, 2022, 12:16:19 PM EST ⋮
<input type="checkbox"/> Mount a zFS file system	Published	Demo	Feb 14, 2022, 12:16:06 PM EST ⋮
<input type="checkbox"/> Create a zFS file system	Published	Demo	Feb 14, 2022, 12:15:34 PM EST ⋮
<input type="checkbox"/> Create a zFS file system	Unpublished	Sample services ▾	Feb 14, 2022, 10:54:16 AM EST ⋮
<input type="checkbox"/> Replace SMP/E RECEIVE ORDER certificate	Unpublished	Sample services ▾	Feb 14, 2022, 10:54:15 AM EST ⋮
<input type="checkbox"/> Delete a RACF user ID	Unpublished	Sample services ▾	Feb 14, 2022, 10:54:15 AM EST ⋮
<input type="checkbox"/> Expand a zFS file system	Unpublished	Sample services ▾	Feb 14, 2022, 10:54:14 AM EST ⋮
<input type="checkbox"/> Unmount a zFS file system	Unpublished	Sample services ▾	Feb 14, 2022, 10:54:14 AM EST ⋮
<input type="checkbox"/> Delete an alias from a catalog	Unpublished	Sample services ▾	Feb 14, 2022, 10:54:13 AM EST ⋮
<input type="checkbox"/> Mount a zFS file system	Unpublished	Sample services ▾	Feb 14, 2022, 10:54:13 AM EST ⋮

Items per page: 25 ▾1 - 10 of 10 items

1 - 10 of 10 pages

zsmfad 7%

🔍 ⋮ 📄

3:01 PM 2/14/2022

Demo 3 : Summary

An experienced z/OS system programmer can now create services with built in logic, test them out and make them available in z/OS Management Services Catalog to help an early-tenure system programmer complete the inputs to perform z/OS management tasks.

Properties for Workflow Step 1. Provide output type to file or dataset

General Details Dependencies Notes **Perform** Status Input Variables Feedback

✓ Input Variables
➡ General
Review Instructions

Input Variables - General
Enter the variable values for this input category.

Write output type: ⓘ - Write output type:
Select or type

Greetings to write to file or dataset: ⓘ - Greetings to write to file or dataset:

Dataset name for HelloWorld: ⓘ - Dataset name for HelloWorld:



Management Services Catalog

Catalog Activity History Administration New service: + | ? | ⌵

Test service: This test service saves to My drafts. It appears in Activity when submitted.

Demo
[Test] Hello World Last saved on Feb 14, 2022, 03:05:39 PM EST
Target system: SY1 Status: Draft

Location
Select Greeting
Run properties

Location
Write output to dataset or file
Write output to dataset or file
☒ FILE
☐ DATASET

File name for HelloWorld
Specify file name for HelloWorld
Enter value

Back Next

zoomfud

“Nice to know that with z/OS Management Services Catalog, IBM is helping us manage our IT infrastructure by modernizing how our early tenure z/OS System Programmers perform z/OS management tasks to reduce the learning curve and boost their productivity.”

Theak Pel

Mid-level z/OS Systems Programmer, US Bank

Handling division of responsibilities

runAsUser
for
experienced
and mid-level
z/OS system
programmers



Set in workflow definition to
**avoid providing higher-level
privileges** to users



**Approved by authorized
personnel** in z/OS
Management Services Catalog

runAsUser
for
early-tenure
z/OS system
programmers



Might **not** have necessary
permission to perform a
management task



Can run services that will **switch
identity to a privileged user** to
perform steps as needed

Get started with z/OS Management Services Catalog

Accessing and configuring z/OS Management Services Catalog

Q: How do I obtain z/OS Management
Service Catalog for z/OS 2.4 and z/OS 2.5

z/OS Management Services
Catalog is a z/OS
Management Facility
(z/OSMF) plug-in available
with z/OSMF

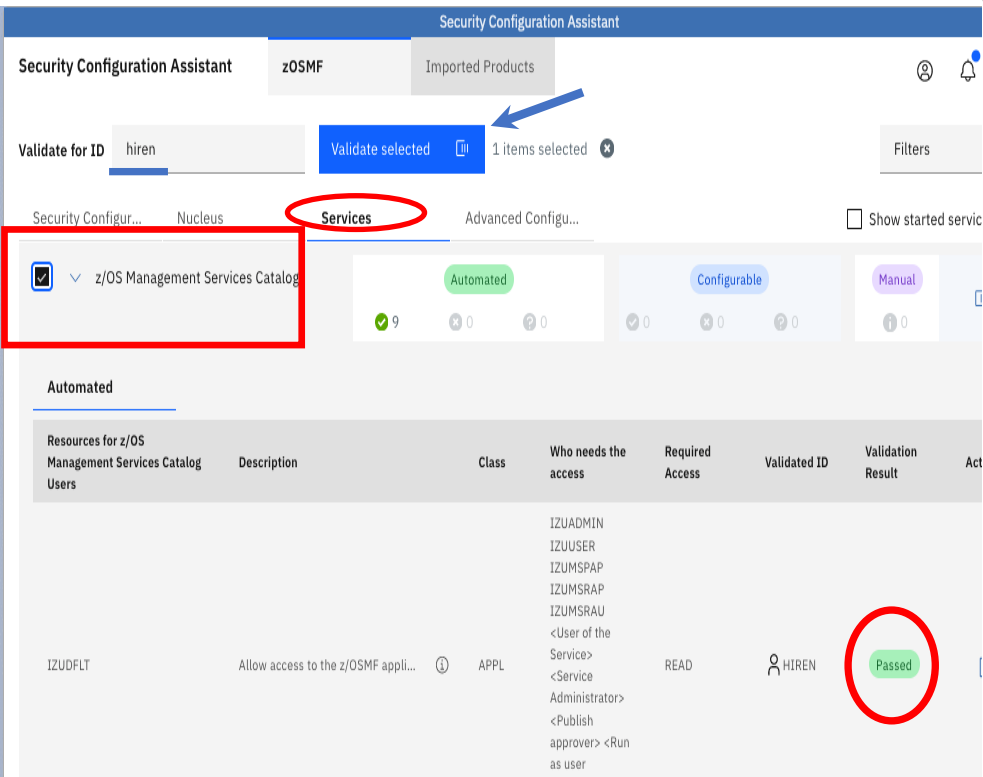
Available with **APAR
PH40810**
(PTF UI78078 for z/OS V2.5)
(PTF UI78079 for z/OS V2.4)

Security configuration with
IZUMSSEC sample in
SYS1.SAMPLIB

Enable through z/OSMF
Settings

See z/OSMF Configuration
Guide for complete
instructions

Accessing and configuring z/OS Management Services Catalog



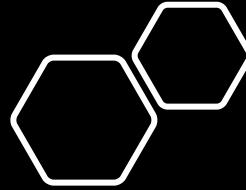
- Q: How do I validate security setup for z/OS Management Services Catalog?

- z/OS Management Services Catalog is listed under “Services” in Security Configuration Assistant. Verify whether you have access or not.

Enabling z/OS Management Services Catalog

- Open z/OSMF General Settings
- Select the services tab and scroll to the bottom of the optional services. Enable z/OS Management Services Catalog.
- Restart the z/OSMF server and the plugin will be available in the z/OSMF App Center. You can drag it to the desktop from there.





Learn more and get started

z/OS Management Services Catalog
content solution homepage

<https://www.ibm.com/support/z-content-solutions/management-services/>



Share your feedback

[Take our survey](#)

or scan QR code with
your mobile device



OPEN **MAINFRAME** PROJECT

ZOROW

Find, collaborate on,
and contribute
workflows on

ZOROW

The z/OS Open Repository of Workflows

<https://github.com/openmainframeproject/zorow>

Thank you

Sunny Anand
Software Developer
Sunny.Anand79@ibm.com

Hiren Shah
Chief product owner
hiren@us.ibm.com

John Czukkermann
Product owner
czuk@us.ibm.com

© Copyright IBM Corporation 2022. All rights reserved. The information contained in these materials is provided for informational purposes only, and is provided AS IS without warranty of any kind, express or implied. Any statement of direction represents IBM's current intent, is subject to change or withdrawal, and represent only goals and objectives. IBM and the IBM logo are trademarks or registered trademarks of International Business Machines Corporation, in the United States and/or other countries. Other product and service names might be trademarks of IBM or other companies. A current list of IBM trademarks is available on ibm.com/trademark.

